

Chess oil paintings on canvas

In Elke Rehder's paintings and graphic work the chessmen often appear. Once she observed an open air game of chess in a park with people standing on the chequered squares. That was the moment Elke Rehder obtained the impulse of looking behind what was happening. She compares the situation of the chessmen, their position on the chess board and their strategic action with our everyday life. Elke Rehder's chessmen become independent and play their own game.

For oil paintings, the artist uses pigment-rich colors and high-quality screens. Elke Rehder uses fast-drying acrylic paint for her large paintings, for example for the about 3 meters high chess painting "Pawns forward and never back."



Pawns threaten the King



Chain of Pawns



The Folk



A clever Trap



Concentration of the Pawns



Pawns appear before the King



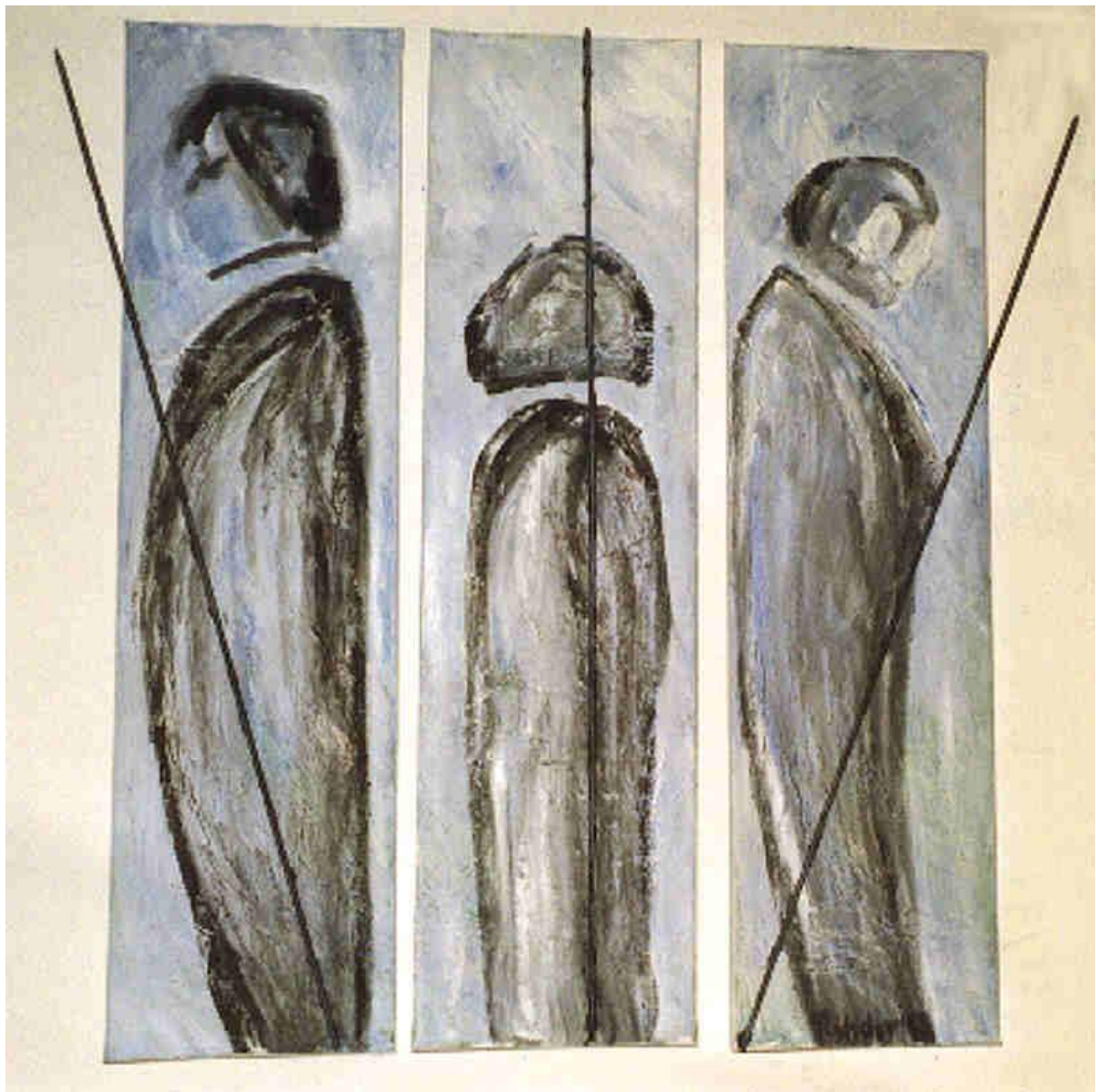
The Battle II



Three Pawns



The Battle



Three Pawns Trilogy



Bishop D7



The Opening



Knight and Pawn



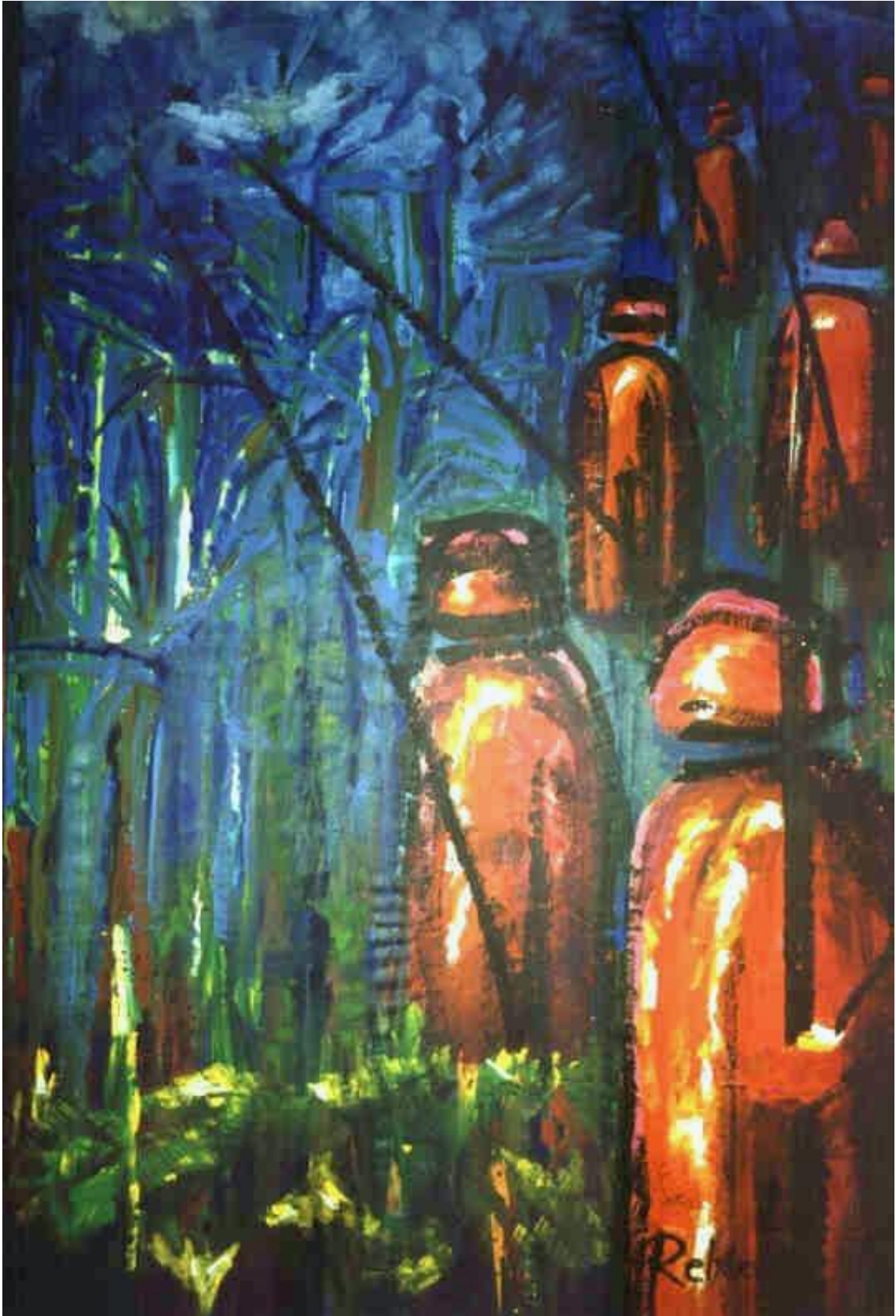
Big Trilogy 2 x 3 m



Chess - Fight



ODOL Chessmen



Pawns ahead and never back



Irrational Position



Front of Pawns in Wolfenbüttel



Front of Pawns

Please visit my German website

<https://www.elke-rehder.de>

More information about me at

https://en.wikipedia.org/wiki/Elke_Rehder